

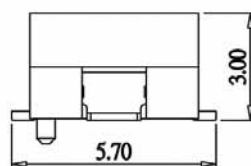
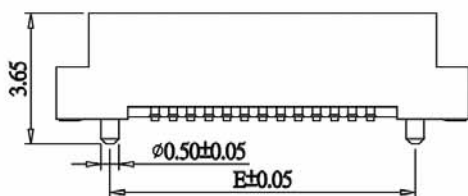
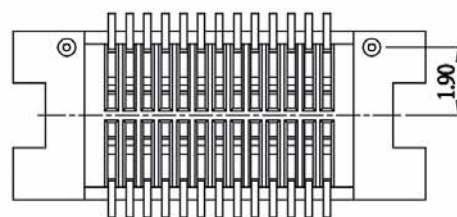
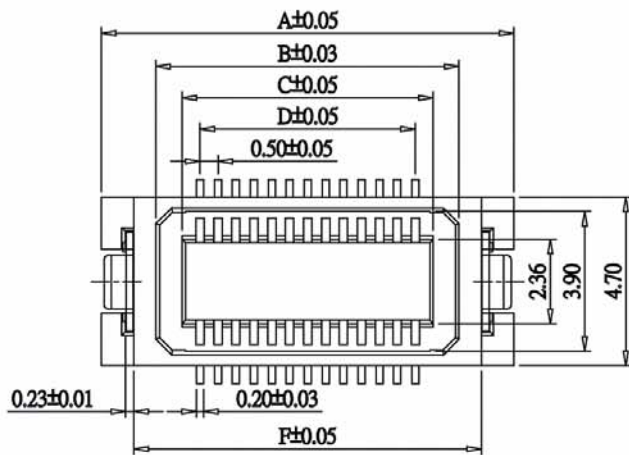
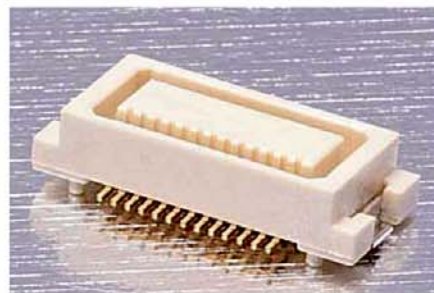
BOARD TO BOARD MALE 0.5mm H=3.0mm

SPECIFICATION

Current Rate:0.5 AMP
 Insulation Resistance:100MΩ Min
 Contact Resistance:30mΩ Max
 Dielectric voltage:50V AC for one minute
 Operation Temperature:-20°C to + 105°C

MATERIAL

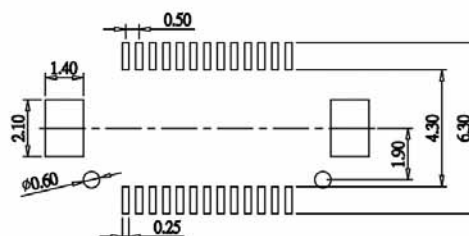
Insulator:Polyester,UL 94V-0
 ©Standard:Nylon 46
 Contact Pin:Phosphor Bronze
 Contact Plated:Gold Plated



©After Mating Height

MATING HEIGHT	MALE P/N	FEMALE P/N
4.00	BTB05MJ30-XX	BTB05FJ33-XX

CIRCUITS	DIMENSION					
	A	B	C	D	E	F
20	10.00	6.75	5.50	4.50	7.00	8.20
26	11.50	8.25	7.00	6.00	8.50	9.70
30	12.50	9.25	8.00	7.00	9.50	10.70
40	15.00	11.75	10.50	9.50	12.00	13.20
50	17.50	14.25	13.00	12.00	14.50	15.70
60	20.00	16.75	15.50	14.50	17.00	18.20
70	22.50	19.25	18.00	17.00	19.50	20.70
80	25.00	21.75	20.50	19.50	22.00	23.20



Recommended PCB Layout
 (PCB TOLERANCE ±0.05)

ORDER INFORMATION

