

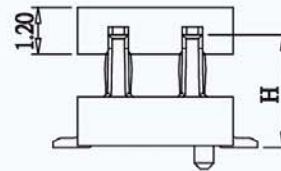
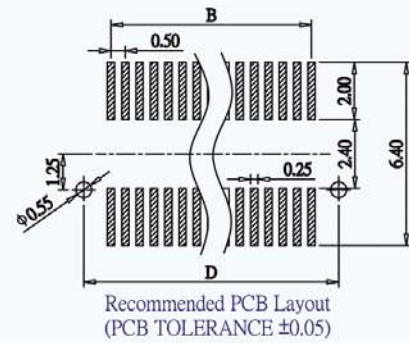
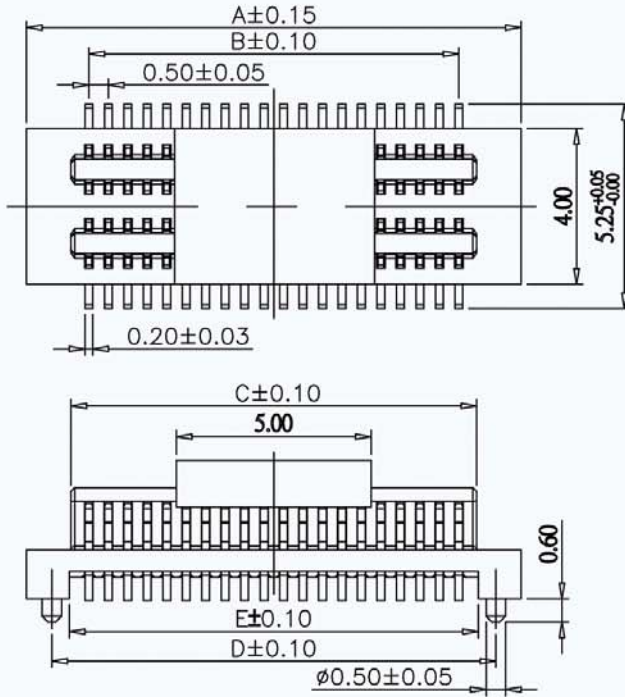
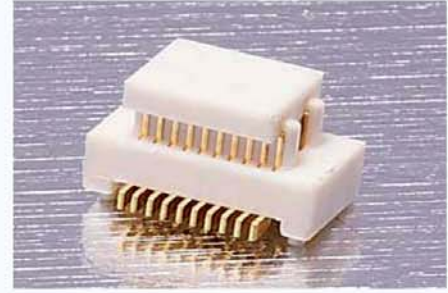
BOARD TO BOARD MALE 0.5mm H=2.4/2.9/3.9/4.4mm

SPECIFICATION

Current Rate:0.5 AMP
 Insulation Resistance:100MΩ Min
 Contact Resistance:30mΩ Max
 Dielectric voltage:50V AC for one minute
 Operation Temperature:-25°C to + 105°C

MATERIAL

Insulator:Polyester,UL 94V-0
 ©Standard:Nylon 46
 Contact Pin:Phosphor Bronze
 Contact Plated:Gold Plated

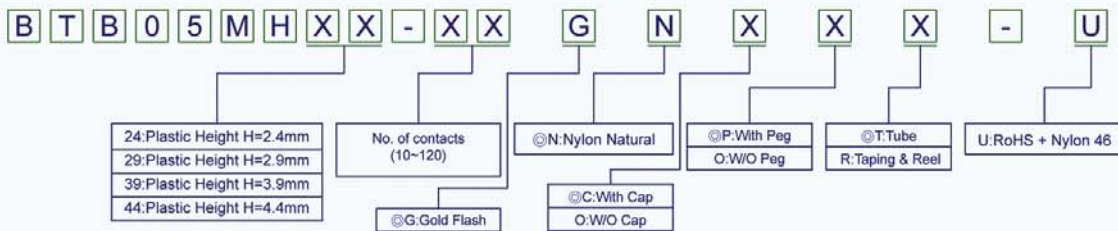


CIRCUITS	DIMENSION					CIRCUITS	DIMENSION				
	A	B	C	D	E		A	B	C	D	E
10	5.20	2.00	2.92	3.90	3.00	36	11.70	8.50	9.42	10.40	9.50
12	5.70	2.50	3.42	4.40	3.50	38	12.20	9.00	9.92	10.90	10.00
14	6.20	3.00	3.92	4.90	4.00	40	12.70	9.50	10.42	11.40	10.50
16	6.70	3.50	4.42	5.40	4.50	42	13.20	10.00	10.92	11.90	11.00
18	7.20	4.00	4.92	5.90	5.00	44	13.70	10.50	11.42	12.40	11.50
20	7.70	4.50	5.42	6.40	5.50	46	14.20	11.00	11.92	12.90	12.00
22	8.20	5.00	5.92	6.90	6.00	48	14.70	11.50	12.42	13.40	12.50
24	8.70	5.50	6.42	7.40	6.50	50	15.20	12.00	12.92	13.90	13.00
26	9.20	6.00	6.92	7.90	7.00	60	17.70	14.50	15.42	16.40	15.50
28	9.70	6.50	7.42	8.40	7.50	80	22.70	19.50	20.42	21.40	20.50
30	10.20	7.00	7.92	8.90	8.00	90	25.20	22.00	22.92	23.90	23.00
32	10.70	7.50	8.42	9.40	8.50	100	27.70	24.50	25.42	26.40	25.50
34	11.20	8.00	8.92	9.90	9.00	120	32.70	29.50	30.42	31.40	30.50

After Mating Height

MATING HEIGHT	MALE P/N	FEMALE P/N
3.00	BTB05MH24-XX	BTB05FH22-XX
3.50	BTB05MH29-XX	BTB05FH22-XX
4.00	BTB05MH29-XX	BTB05FH27-XX
4.50	BTB05MH29-XX	BTB05FH32-XX
5.00	BTB05MH39-XX	BTB05FH30-XX
5.50	BTB05MH44-XX	BTB05FH30-XX
6.00	BTB05MH44-XX	BTB05FH35-XX

ORDER INFORMATION



©: Standard Recommend