

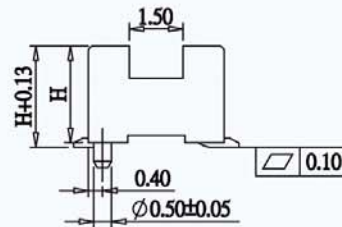
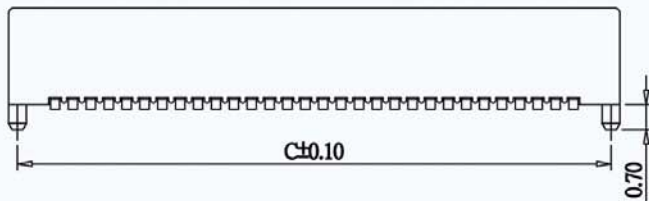
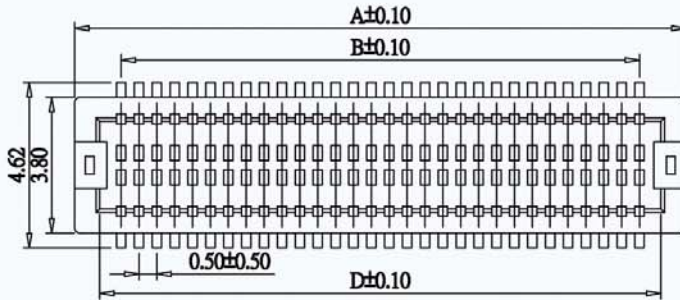
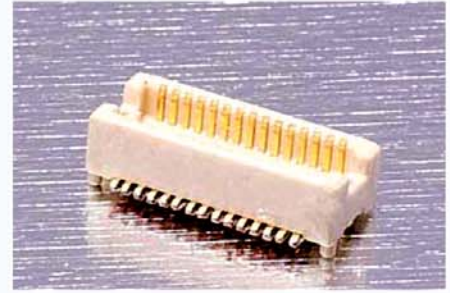
BOARD TO BOARD FEMALE 0.5mm H=1.7/2.2/2.7/3.2mm

SPECIFICATION

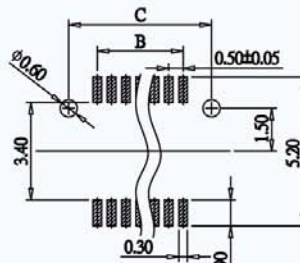
Current Rate:0.5 AMP
Insulation Resistance:100MΩ Min
Contact Resistance:30mΩ Max
Dielectric voltage:50V AC for one minute
Operation Temperature:-20°C to + 105°C

MATERIAL

Insulator:Polyester,UL 94V-0
ⓄStandard:Nylon 46
Contact Pin:Phosphor Bronze
Contact Plated:Gold Plated



CIRCUITS	DIMENSION			
	A	B	C	D
10	4.60	2.00	4.10	3.20
12	5.10	2.50	4.60	3.70
14	5.60	3.00	5.10	4.20
16	6.10	3.50	5.60	4.70
18	6.60	4.00	6.10	5.20
20	7.10	4.50	6.60	5.70
22	7.60	5.00	7.10	6.20
24	8.10	5.50	7.60	6.70
26	8.60	6.00	8.10	7.20
30	9.60	7.00	9.10	8.20
32	10.10	7.50	9.60	8.70
36	11.10	8.50	10.60	9.70
40	12.10	9.50	11.60	10.70
50	14.60	12.00	14.10	13.20
60	17.10	14.50	16.60	15.70

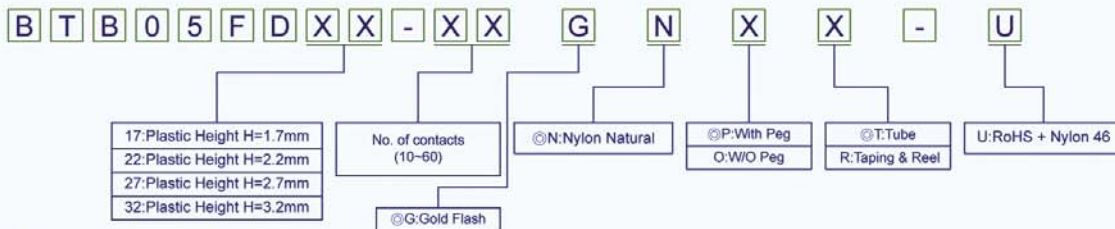


Recommended PCB Layout
(PCB TOLERANCE ±0.05)

ⓄAfter Mating Height

MATING HEIGHT	MALE P/N	FEMALE P/N
2.50	BTB05MD17-XX	BTB05FD17-XX
3.00	BTB05MD22-XX	BTB05FD22-XX
3.50	BTB05MD22-XX	BTB05FD27-XX
4.00	BTB05MD27-XX	BTB05FD27-XX
4.50	BTB05MD27-XX	BTB05FD32-XX
5.00	BTB05MD42-XX	BTB05FD22-XX
5.50	BTB05MD42-XX	BTB05FD27-XX
6.00	BTB05MD47-XX	BTB05FD27-XX
6.50	BTB05MD47-XX	BTB05FD32-XX

ORDER INFORMATION



Ⓞ: Standard Recommend

Ⓞ: Standard Recommend